

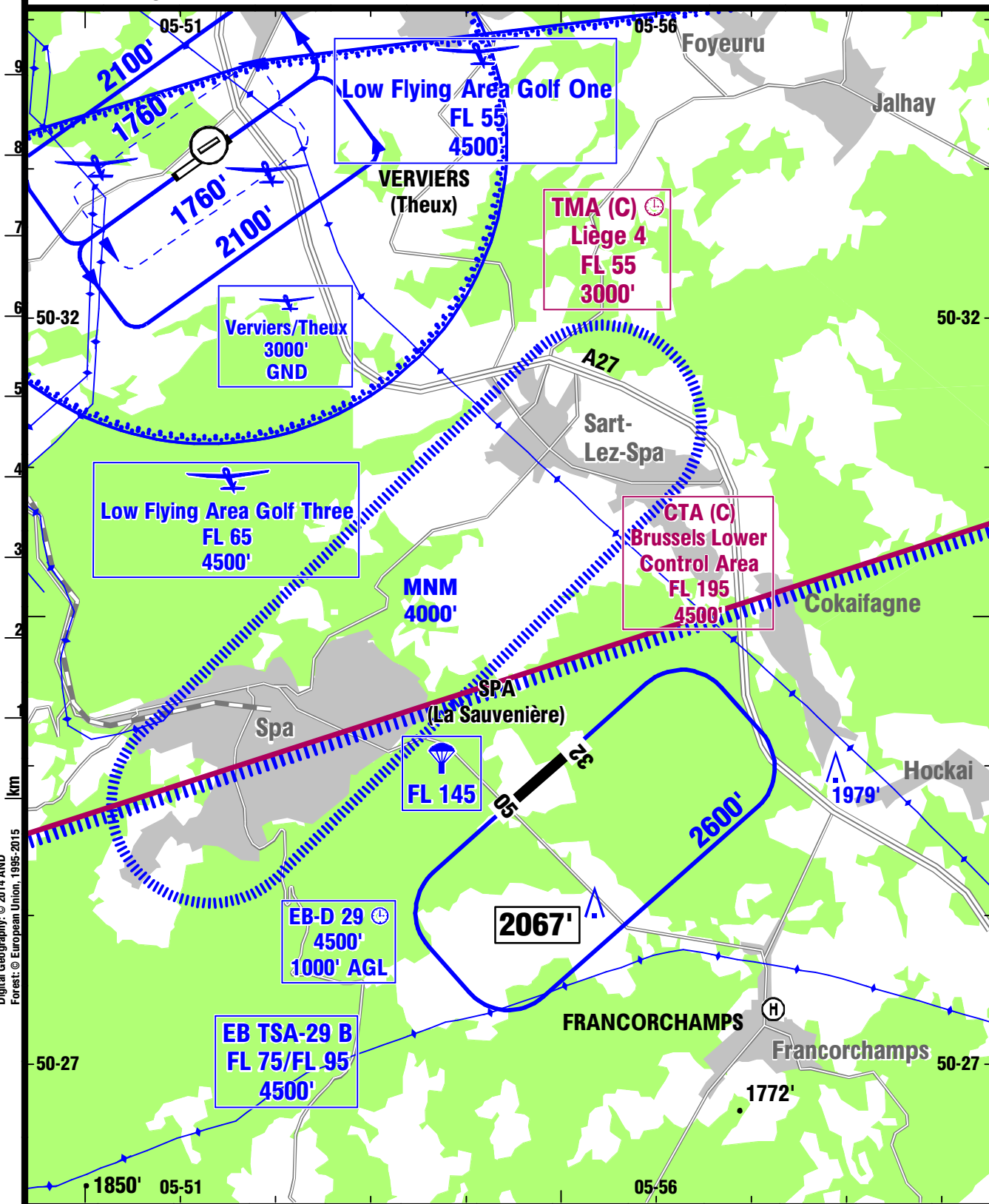
EBSP
LA SAUVENIÈRE

19 JUL 24 **(19-1)**

SPA
BELGIUM

BRIEFING STRIP™	LOCATION Elev 1534' /468m N50 29.0 E005 54.6	FIS BELGA INFORMATION 129.325⁽¹⁾ BRUSSELS INFORMATION 126.900⁽²⁾	VAR 2°E
	AIRSPACE	SPA RADIO 124.640 (fr, en)	
	LIÈGE APPROACH 119.280 ⁽³⁾ BRUSSELS CONTROL 128.805 ⁽⁴⁾ (5) 131.100 ⁽⁴⁾ (6) 129.575 ⁽⁴⁾ (7) 125.000 ⁽⁴⁾ (8) 128.200 ⁽⁴⁾ (9) BELGA RADAR 129.325 ⁽⁴⁾		

(1) MIL (2) CIV (3) Liège TMA (4) Brussels Lower CTA (5) North (6) West (7) East (8) Luxembourg (9) Huldenberg



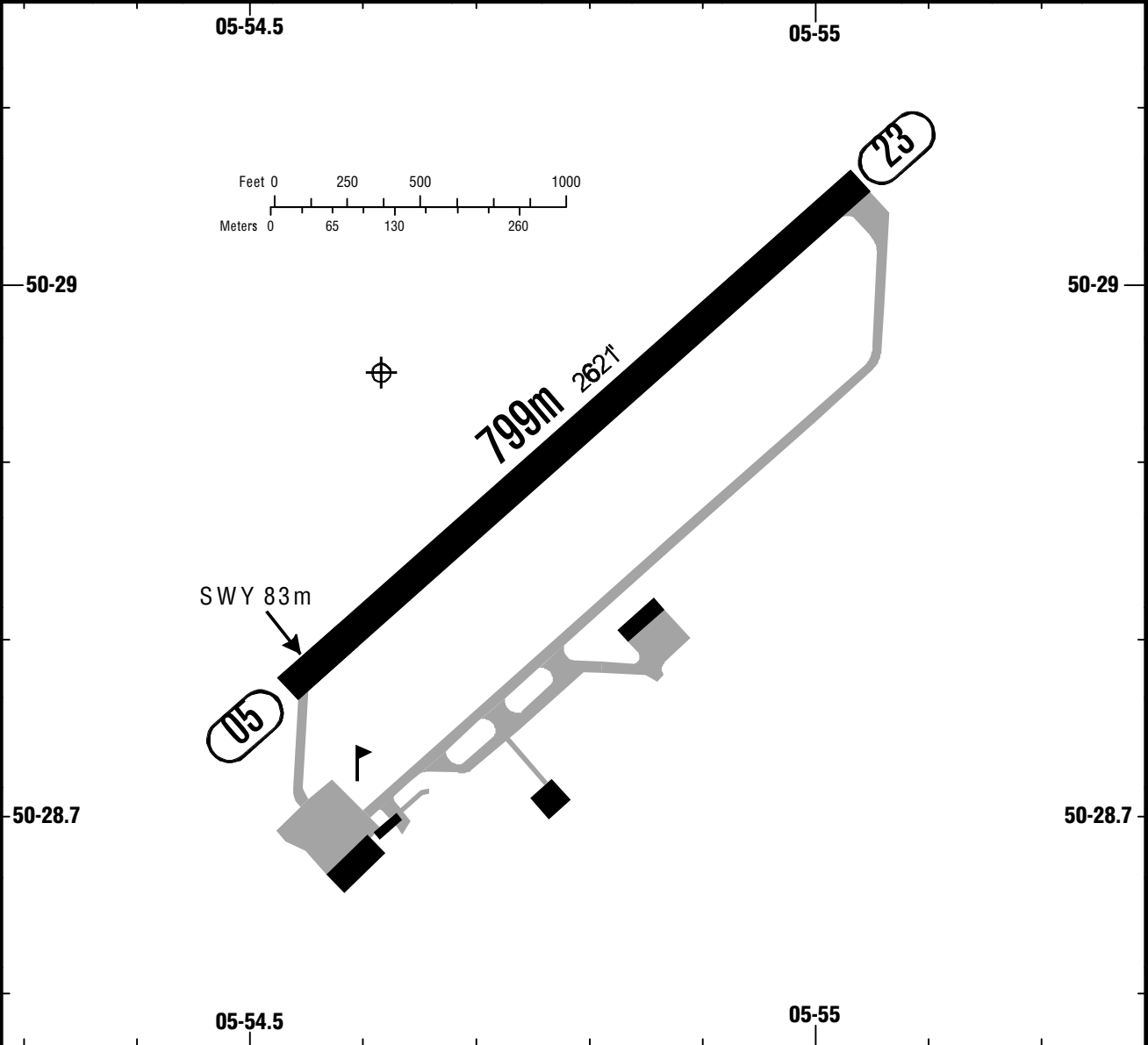
Digital Geography: © 2014 AND
Forest © European Union, 1995-2015

**EBSP
LA SAUVENIÈRE**

19 JUL 24 **(19-2)**

**SPA
BELGIUM**

BRIEFING STRIP™	LOCATION	ADMITTED AIRCRAFT
	Elev 1534' /468m N50 29.0 E005 54.6	SPA RADIO 124.640 (fr, en)   



RWY No	Dimension (m) - Surface	TORA (m)	LDA (m)	Strength	Lights
05 23	799 x 30 Asphalt			5.7t	---

1 Longitudinal slope < 2%.

RDO mandatory.

ACFT should not overfly hamlet Nivezé and its surroundings below 4000'.
Climbing to higher levels must be effected above the wooded area of the "Fagnes" SSE of AD.
Jet ACFT operations not allowed.

GLD flights: O/R.
RWY 05 RH traffic circuit.
RWY 23 LH traffic circuit.

Chocks mandatory on parking area.
On arrival, first radio contact is mandatory within at least 5 MIN prior entering the sporting area to confirm parachuting activities are in progress or not.

Overflight of the AD is forbidden during parachuting activities.
Due to the presence of significant obstacles, solo training flights require two familiarisation flights with instructor. The solo training flight has to be carried out within 6 weeks after the last familiarisation flight with instructor.